

GORING HEATH NEWSLETTER

*News, Information
and Comment for
Goring Heath,
Whitchurch Hill
and Crays Pond*

July 2020

Issue 175

Visit us at:

www.goringheath.com

Facebook: 'Goring Heath Parish News'
goringheathnewsletter@gmail.com

pangbourne
tennisclub



New Summer Programme
NEW monthly £10 Membership
Membership to March 2021 only £50
New Box-League starting
ALL WELCOME
www.pangbournetennis.org

Publicise your event and increase attendance by giving us the dates.
IT IS FREE

We welcome event dates from all local charities and groups for listing in this feature. Please send details to the Editor at: goringheathnewsletter@gmail.com
Please allow sufficient time in advance for the publication of the appropriate newsletter. Contribution deadlines and publication dates are on the inside back cover.

Chairman's Comments

As we all continue to navigate through these strange times, life in many ways becomes more complex. On one hand the virus hasn't gone away. We still need to do all we can to reduce its incidence, avoid a second spike and ensure we support the most vulnerable in our Parish. This continues to put limitations on us all. Yet on the other, we have to start thinking about the future and the other things we would normally want to focus on to ensure our community remains such a pleasant place to live.



Accordingly, your Council continues to try and balance the two. We are hugely grateful for our superb team of volunteers who have been there throughout, under the guidance of our Clerk, Amanda Holland. They continue to provide valuable support wherever necessary for those that need it. We sadly also have to still keep our children's playgrounds closed. Alongside this, there is a degree of business as usual. Recent initiatives have included: completing the resurfacing of the Parish Hall car park; working actively with our grass cutting contractors to tighten their delivery – I hope that will see the improvement; fighting on behalf of walkers in the woods alongside Long Toll to retain access to historical pathways as new owners sadly erect wire fencing; and signing-off the work on upgraded shelving in our two “telephone box libraries” to improve their functionality – it has been great to see them so widely used during lockdown. And there was even new flag purchased for outside the Parish Hall which flew proudly on VE day!

One final initiative that I feel is still of huge importance is the reduction of the speed limit at Crays Pond to 30mph. Whilst the County Council has inevitably been distracted over the past few months, under Fred Rutherford's incessant pressure we have escalated the issue within the County Council, through both our own representative and the Council leader. We remain impatient to resolve this and will keep pushing hard to get this implemented on behalf of the Parish.

Finally a warm welcome to our new Parish Councillor Tarek Moghul. A long time resident of Whitchurch Hill, we are delighted to have Taz on board.

Chris Jessop
Chairman

Planning Decisions

The following planning applications have been considered. Where a decision is not given, it means the Parish Council has not yet received written confirmation from S.O.D.C.



Premises and application details	Parish Council	SODC
<p><u>P20/S1706/DIS</u> Former RAF Woodcote MU (and former Goring Heath Poultry Farm off B4526 Goring Heath RG8 7RU Discharge of Conditions 2 (Landscaping), 3 (Tree Protection), 4 (Contamination), 5 (Spoil Disposal), 6 (Materials), 7 (Limitation on Use), 8 (External Lighting), 9 (Ecological Assessment), 10 (Access), 11 (Vision Splays), 12 (Parking Provision), 13 (Off-Site Highway Works) of application P18/S2555/FUL. Erection of a training building, 5 huts and the renovation of disused fire station, ablutions block and parking. Not subject to Public Consultation.</p>		
<p><u>P20/S1661/HH</u> Beech View Whitchurch Hill RG8 7NY Loft conversion including installation of a crown roof dormer to the rear elevation, and five roof-lights to the front elevation, to form additional habitable accommodation.</p>	No strong views	
<p><u>P20/S1521/HH</u> Hunters Moon Hill Bottom Whitchurch Hill RG8 7PT Two storey side extension incorporating garage conversion, construction of full width box dormer on back elevation. Re-modelling of former on front elevation.</p>	Objection	
<p><u>P20/S1328/LB</u> Lavender Cottage Coldharbour Goring Heath RG8 7SY Proposed insertion of new dormer windows on front and rear elevation; insertion of three conservation roof lights to rear elevation; half hip to gable conversion of secondary roof; alterations to front porch; first floor internal alterations.</p>		Listed Building Consent

Planning

We would also like to point out that No Strong Views is one of only three choices that SODC gives the parish council. It should not be read as illustrating tacit approval of an application. More often than not this choice is supplemented with specific comments from the parish council highlighting areas of concern

Premises and application details	Parish Council	SODC
<u>P20/S1168/LB</u> <u>P20/S1167/HH</u> Querns Collins End Goring Heath RG8 7RH Single storey infill extension and internal layout alterations to Querns House, which include re-modelling of the kitchen. External alterations to existing barn. Internal alteration which include forming an opening in the dividing wall between Querns Cottage and the barn. External works to include a relocated entrance, driveway, swimming pool, and new garden store.	No Strong Views	
<u>P20/S1090/FUL</u> Flint House Reading Road Goring Heath RG8 0LL Removal of the existing bollard and lamp post external lighting and replacing with low energy low glare equivalents (As per additional information submitted 1 May 2020)		Permission Granted
<u>P19/S2144/FUL</u> Penny Royal Saw Mill Long Toll Goring Heath RG8 7SD Development of new dwellings and associated roads, driveways and gardens.	Objection	
1 Coombe End Whitchurch Hill RG8 7PD To repoint and repair the existing pointing to the entire cottage removing previous inappropriate cement mortar and poor quality lime mortar. To tie in minor cracks above and below windows using horizontal 5mm stainless steel rods across cracks within existing mortar bed joints. To add an additional rainwater down pipe to No. 2 Cottage where rainwater currently discharges onto hipped end and is running down front elevation.		Listed Building Consent
<u>P20/S0880/HH</u> Chimney Pot Cottage Crays Pond RG8 7QG Single storey side and rear extension		Permission Granted

Whitchurch Parish Magazine

Publication of the next issue of the Whitchurch Parish Magazine (due in June) has been deferred until July due to the difficulties of circulation and lack of content caused by the current Coronavirus situation. The next issue will cover July and August, and we will return to the normal schedule in September.

Comments by District Councillor

Reflecting back over the last twelve months in which I have been the District Councillor, it seems to have been quite an eventful year, with the controversy over the Local Plan and then, just as that was settling down, the impact of Covid.

Covid has resulted in almost all SODC staff working from home, and meetings being held online only. SODC staff have been working really hard, and doing a terrific job in meeting the new obligations placed on them by the government to address the Covid situation.

As with many organisations, some of the changes at SODC that have come about through Covid may become permanent. Throughout the country, as more people are working from home there will be less travel and traffic, leading perhaps to the reduction in the need for new roads. All good for air quality, carbon emissions, the climate and the long term future for the planet and we who live on it.

On a more parochial note, all local business premises that are listed for business rates have received a flat £10,000 grant, and there are also other grants that are administered by SODC to certain businesses, particularly in hospitality.

Planning Committee meetings have just restarted, as online meetings only but at the moment only District Councillors and officers can speak. They are recorded and can be viewed online. As the vice chair of the Planning Committee, I have been able to challenge and, sometimes defeat, ugly and inappropriate development. Some months ago, I objected to the conversion of an office block by the station in Henley to flats. While the conversion itself was not a problem, the proposed look of the building was dreadful, all reflective glass and steel columns. I was particularly pleased when the development went to appeal and was refused on the very same reasons that I had highlighted.

The Local Plan which envisaged a huge amount of development, particularly in the Oxford Green belt has been forced through to its next stage, Inspection, by the Secretary of State, Robert Jenrick.

.....

Normally, the Inspection includes a public hearing, but this one will also be done on line. Many of the new councillors, including myself, challenged the Plan at the consultation stage, and are now being supported by a former Chief Planning officer in preparing our challenges for the Inspector to consider. It is becoming even more apparent that the plan that was submitted has many flaws, and I hope that the Inspector will address these in his report. On a personal note, I stood in the election to protect the AONB, and will continue to do so at the Inspection.

We are hearing rumours that the government is going to take planning away from District and other councils; as Winston Churchill said about democracy being the worst form of government except for all the others, perhaps that is also true of the current planning system. We shall see.

Councillor Peter Dragonetti

District Councillor for Kidmore End, Whitchurch, Goring Heath and Mapledurham

Whitchurch & Goring Heath History Society

In July we had planned to go on an outing to Farnborough on the Downs where we could see the John Piper stained glass window in the church and a enjoyed a pub lunch. Next year maybe.

We don't meet in August, but our September meeting is planned for Thursday 17th, when Mark Davies is scheduled to tell us about crimes, escapes and punishments at Oxford Castle in the 18th and 19th centuries. Fingers crossed!

Vicky Jordan

OWL (Our Woodcote Library)

The library is still closed (as are all Oxfordshire libraries), and we understand that there will be quite a few changes before it can open again. (Oxfordshire/Berkshire library details on pages 20/21).

Vicky Jordan

Birchen Copse and Robbers ... of our footpaths

If you go down to the woods today you're sure of a big surprise - in this case not a very pleasant one. One of the trends in the Chilterns in recent years has been for an area of woodland to be purchased, and then subdivided into small plots. These are then sold as 'leisure plots', with the new owners free to fence their new territory and fend off all intruders. These intruders are generally peace-loving locals walking their dogs through the woods near them, along both officially registered rights of way and tracks which, whilst unofficial, have nevertheless been used by generations as routes through the woods.

The woods just to the east of Long Toll, Birchen Copse, are very popular with both local walkers and ramblers from farther afield. This is a beautiful area of 'ancient woodland' and lies within an 'Area of Outstanding Natural Beauty' (AONB), but sadly these woods have fallen prey to the latest vogue of subdivision and fencing.

One of the owners has fenced his new plot, entirely legally, and in doing so has blocked a path through the woods which is very popular with local walkers who have used the route for many years. This action has not been exactly welcome, and has engendered quite a lot of anger against the new landowners!

If a path has been used for many years, without any challenge from the landowners, then it is possible to claim that the path should become an official Right of Way. This status will give the path legal protection and allow it to be used freely for generations to come. The process is called a DMMO (definitive map modification order), and is carried out through Oxfordshire County Council as they have responsibility for all roads, including footpaths.

The Parish Council, with the help of Woodcote Conservation Group, is beginning the rather lengthy process aimed at making two routes through Birchen Copse into Rights of Way, including the route which has been recently blocked with a fence.

I now need your help!

I am looking to find as many people as possible to back up the DMMO application. Could you add your voice, and help to secure the right to walk these paths for years to come? If you are a regular walker in Birchen Copse, please get in touch with me and I will send you a map of the paths in question. My contact details can be found at the back of the magazine.

Councillor Liz Collas

Goring Heath Parish Hall



Like other venues, the parish hall has been locked up since mid March, and so we have missed having the Spring Show as well as the usual bookings for exercise classes, meetings and private parties.

We do continue to have to bear overheads, although as we don't employ anyone these are not too onerous. With the splendid new surface in the car park, we are all set to go.

The hall has benefited from the lump sum grant of £10,000 paid by the District Council, which should cover our lost income unless the situation never recovers.

As information is increasingly provided on line, we are considering equipping the hall to have a better visual and audio experience; for example, the District Council is expecting to stop sending out paper copies of plans to the parish council, and so at parish council meetings it will be good to be able to see the plans on a large screen rather than crowding round a laptop. We are also thinking that it could be an opportunity to equip the hall with cinema quality equipment so that we can show films. The lockdown must end one day !

Chris Whatmore
Goring Heath Parish Charity

NEWSLETTER DISTRIBUTORS (STILL) NEEDED!

To continue to regularly receive your favourite reading material, new volunteers are needed to be distributors of the Goring Heath Newsletter. We particularly need volunteers for the outlying areas of Goring Heath and Cold Harbour. It's a great chance to get to know your local area, get some fresh air and exercise and just be helpful!

If you can help, please contact the Clerk, Amanda Holland (details on the back page).

Whitchurch Hill WI



We last met as a group in March - it seems a long time ago now.

Whilst we are known as Whitchurch Hill WI our members come from many other locations too such as Whitchurch, Purley, Tidmarsh, Goring and everywhere in between.

This does mean that meeting up (even by chance) is unlikely for many of us, so we have used phones, emails and chance encounters to keep in touch.

One of our members (and Secretary) Patricia Dent moved away to the south coast in May and a number of us did get the chance to wish her well on the day of the move itself. One of our members made a cake for her for the journey. For others there have been significant birthdays and these have been acknowledged with flowers and cards. Others of us have spent time helping the more at risk in the community by undertaking such things as shopping, making face masks, and assisting with gardening.

We've sewn, embroidered, baked, and shared book titles. VE Day was celebrated by some members with decorations adorning driveways and houses. More recently we've been sharing photos of our favourite garden flowers - and there is little doubt that some gardens would be worthy of being part of the National Gardens Open Days.

Whilst we do not know when we might be able to resume our face to face meetings it is nice to keep in touch. Community is a vital part of day to day living, even across the airwaves.

Should you be interested in learning more about us as a group do give Frances Strange a call. She can be contacted on 01189842162. We will be back again as an active group as soon as we can.

Miffi Sibblings
Courtesy of Susan
Dryden



Sally Bergmann

THE NOTICEBOARD

YOUR HELP IS NEEDED

Protecting wildlife and
carrying out practical
maintenance at Cray's
Pond

Help delivering the
Parish Newsletter

Sourcing new
advertisers for the
Parish Newsletter

Collecting medicines
and prescriptions for
vulnerable neighbours

Working party to
maintain trees,
hedges and
footpaths.

Walking local
footpaths, looking out
for condition and
accessibility.

Helping with the
Annual Litter Pick

Building new shelving for the
Telephone Box Book Exchanges.

If there is anything you'd like to help with, please contact our parish Clerk, Amanda Holland at goring.heath.parish.council@gmail.com or tel 01189844867

GORING HEATH VOLUNTEERS

On 23 March 2020 the Government announced: if you were clinically extremely vulnerable, you were strongly advised to stay at home, to protect your health and shield from the coronavirus. In Oxfordshire over 20,000 letters were sent out, advising people to stay home until the 30th of June.

Immediately after this announcement, the Parish Clerk in Goring Heath began to take calls from people offering to help. Even people who were vulnerable themselves were volunteering their time and asked us what they could do.

Over 50 people formally came forward from our community, willing to shop, collect medicine or prescriptions, whatever was needed. We set up a database, a Whatsapp group and a phone line, changed the Parish Council website and began to take calls from people needing help.

To date, we have had 30 households in the parish asking for support. Requests have mostly been for shopping and medical requirements, other requests have been to help with online shopping, advice for paying for shopping when no longer able to provide cash, and a dog walk! Some people found it difficult to source eggs, so we set up an Egg Station outside the Parish Hall providing free, fresh eggs to those that needed them.

The most vulnerable residents in our community have been contacted to make sure they are safe and well and have everything they need. People on the shielded list have had the option to be supported with direct help from us locally, and also from a dedicated phone line operated by Oxfordshire County Council. If you are feeling vulnerable or worried and need support, contact Oxfordshire Shielding services 01865 89 78 20 or email shield@oxfordshire.gov.uk.

The Goring Heath Volunteers have decided that they would like to remain on alert for now, and will not be standing down just yet! We have decided to close the egg station though, as eggs have become more readily available of late. The Goring Heath Volunteers will continue to offer their time to help anyone in the community.

If you want to volunteer, or if you need some support, the parish website goringheath.com provides further information, or Call us on **0751 956 1877**.

.....

Volunteers have been absolutely vital during these last couple of months, and the Parish Council, on behalf of our community here in Goring Heath, would like to THANK YOU for all that you have done. To Chris and Paula Uden and Chris and Sally Bergmann for essential admin, to Sue Whitehead for holding the Parish Phone line, and to Clive and Yvonne Smith for donation and provision of the eggs. Recently, Gill Painter and Becky Rainsford have donated a number of fabric washable face coverings that we have given to people on our list. If you would like one, please contact Amanda on 07814 360 566.

Thank you too and to all of you who have contributed so much to make Goring Heath such a wonderful place to be. Please keep in touch via goringheathparishcouncil@gmail.com with your news and views.

Amanda Holland
Goring Heath Parish Council Clerk

Enjoy a stroll but no-one to walk with? **Goring Heath Monthly Community Walks**

One of the many messages coming out from the authorities over the last months is how important outdoor activity is for physical and mental well-being.

Recognising this, and (at the time of writing) the relaxation on how many people can meet up together outside we have decided to try and restart the monthly walks. July will see the first one - in the new way of doing things!

Current group members have been approached to ascertain the level of interest. If necessary there maybe two individual groups walking, with of course everyone appropriately distanced. Under current rules no walker will be able to join a group of more than 5 other people.

If anyone is interested in joining the walks you are welcome to ring Sally on 07585195669. However, until the take-up from original members is known, and/or the rules are relaxed again, it may not be possible to walk in larger numbers just yet. Watch this space.

In the meantime - it is so nice to see so many villagers out walking - chance encounters are a great way to keep in touch with friends and neighbours.
please ring **Sally on 07585195669**

Race raises thousands for charity



Chris Sumner and Louisa Devismes of Hill Bottom Close, Whitchurch Hill have raised more than £19,000 (and counting) for the charity NHS Charities Together.

Louisa and Chris, whose company Racesolutions Ltd delivers races for charities and private organisations, usually hold races in Wasing Park in Reading, and in Leeds. However, due to lockdown restrictions they decided to hold a 'virtual' 24 hour race where participants ran locally as solo runners or as part of a team.

Every runner was asked to contribute a suggested donation of £5 each and more than over 1,200 people took part to contribute towards the amazing total.

The White Lion

The Appeal hearing into the nomination of the White Lion as an asset of Community Value was due to be held in late May, and although the Tribunal offered that it was held on line, to which both the Parish Council and District Council agree, the owner is insisting on a full hearing in person.

There is no firm date set, but it is likely to be in the autumn.

Lockdown Projects!



Freshly painted gnomes, home-made face masks, newly created vegetable garden and a revamped table. If you've spent lockdown creating something you're proud of, send it in to goringheathnewsletter@gmail.com and it'll be published in the next Newsletter.

Face Masks

If you're a dab hand at sewing and would like to help the public health effort by making face masks, here are some tips from the Good Housekeeping Institute: The best fabric for homemade masks is a **tightly woven, 100% cotton fabric**. Bed sheets, curtains, and woven shirts are good options if they're made entirely out of cotton. Avoid knit fabrics (e.g. jersey T-shirts) because they create holes when they stretch, which the virus could get through. Prewash fabrics using hot water to kill germs and pre-shrink the material so it doesn't change shape after people wash it themselves.

You will need: a [sewing machine](#) and fabric, a [nonwoven interface](#) for reusable masks to help block out particles, [elastic](#) or ties to keep it secure on the face, and a metal piece (like a [paper clip](#)) to make it fit snugly around the nose. You can substitute the interface with a nonwoven product like [HVAC filters](#) or [coffee filters](#), but remember that these shouldn't be used for donations if they're not washable. Non-fibreglass [HEPA vacuum bags](#) are also non-woven with good filtration capabilities.

THE PATTERN is a **9 x 8-inch (23 x 20 cms)** rectangle with 1-inch pleats)

Cut pattern out

Use pattern to cut 2 cotton fabric pieces

Use pattern to cut 2 interfacing pieces (**MUST** be nonwoven)

Place cut fabric with front sides together

Place both layers of the interfacing together on top of fabric (on the back side of fabric)

Sew top 9" seam (2.5-3 stitch length is best) with ¼" seam allowance

Flip open with front side of fabric up

Press seam flat to one side

Insert metal piece along seam between the 2 pieces of fabric

Stitch ½" rectangle that is indicated at top of pattern (with wrong sides together) to secure metal piece

Flip back to right sides together, stitch bottom 9" seam

Flip back to right side out and press bottom seam

Use pattern to help mark pleats. Pleat the 3 pleats all in the same direction, put a pin to keep them in place

Cut binding tape at 36" per side

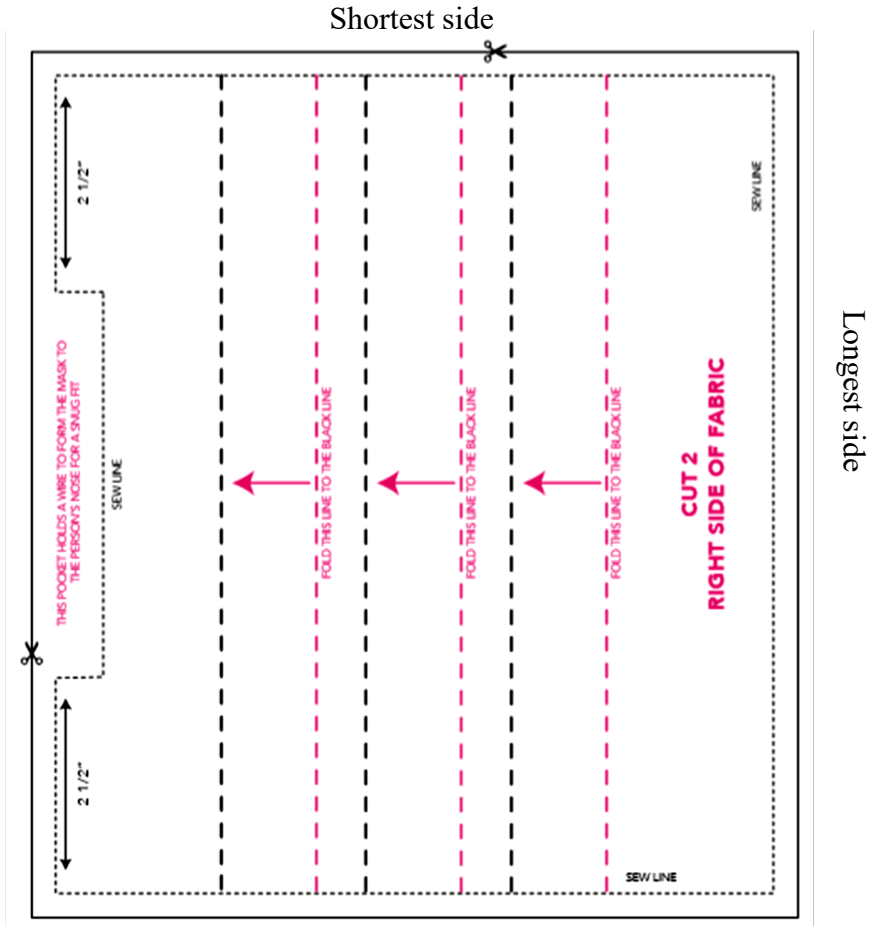
Find the centre point of the binding and the centre point of the mask and pin the binding on the mask with the mask sandwiched between the binding

Sew binding

Repeat on the other side of the mask

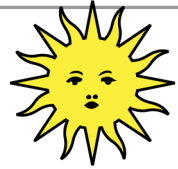
Press pleats. Now it's finished!

Printed here is the face mask pattern in half scale. You'll need to **double** it to be 8 x 9 inches (23 x 30 cms)



To watch a video showing how to make the mask go to <https://www.goodhousekeeping.com/health/a31902442/how-to-make-medical-face-masks/>

Weather Facts:



May 2020 was the sunniest month recorded since records began. It was also **the driest May on record**, since records began in 1901 - the previous driest was 1990, with 3.1 mm.

All the month's rainfall, just 1.0 mm, fell in showers on 1 May, which means it's been over a month since we've had any measurable rainfall. All the more remarkable turnaround after an autumn and winter when rain fell more frequently than two days in every three.

At Oxford, this May was the driest in over 200 years - since 1795.

In the



The Parish Council have been receiving complaints about dog fouling in our parish.

At the last council meeting it was agreed that a dog waste bin is to be installed in Gashes Lane.

While most dog walkers are responsible, those who don't clear up after their dogs are very antisocial.

The best thing is to pick up the waste and put it in a dog waste bin, or your black waste bin at home. Or, If you are not in a farmer's field, get the waste off to one side, off the path.

One of the worst thing you can do is to pick it up and then hang the bag from a hedge and equally bad is leaving the bag on the ground. If you have gone to the effort of picking it up, please take it home.

Peter Dragonetti

Earl and Countess of Wessex offer thanks to volunteers



As part of National Volunteers' week, the Community Support team from South Oxfordshire and Vale of White Horse District Councils were asked to share a message of thanks from the Earl and Countess of Wessex to all those helping to manage the response to Covid-19 across the county, and to thank people for their incredible efforts.

National volunteers' week is about recognising and appreciating the role that volunteers have undertaken to support friends and neighbours through this difficult time. The Community Support team welcomed some brilliant South and Vale volunteer groups to speak at their virtual meetings during the week, and were blown away by their kindness and dedication to help those who need it most.

communitysupport@southandvale.gov.uk or on 01235 422600

ART EXHIBITION

Goring Heath Volunteers would like to hold an art exhibition at the end of the lockdown to showcase local talent in Goring Heath.

Please send your entries to Amanda Holland at
goring.heath.parish.council

Goring Heath Bowls Club (Almshouses)



Of course all our activities have been on hold during Lock-down, and I'm pleased to say that at the time of writing none of our members seem to have caught the dreaded virus.

However, with the recent relaxation of the rules, we have started an in-house singles league, where we can organise games with the appropriate hygiene and social distancing, though we can't use the usual indoor facilities at The Almshouses. The biggest issue is resisting the impulse to shake hands after a game!

Our usual programme of roll-ups and matches with other clubs is, naturally, on hold. I would still encourage anybody interested in playing to contact our captain, Daphne Walker, on 01491 682154. We'll get back to you when life returns to something more normal.

David Watson
Secretary

PANGBOURNE LIBRARY

Pangbourne Library is now closed until further notice

At present, library buildings are on the list of premises that are legally required to remain closed with reopening planned as part of Phase 3 in July 2020. Initially this is likely to be an order and collect service only.

Joining West Berkshire Libraries is free and open to everyone. You only need to register online if you have not already done so at a library.

Online Registration will enable you to use e-Books, e-Audiobooks, e-magazines and e-Newspapers free of charge. When libraries re-open you will need to confirm your registration to borrow items or to access other services.

In the meantime, they are continuing to extend return dates on books so there will be no overdue fines, but if you prefer you can now return your books through the book drop/letterbox at any of our libraries. Please note that items returned will not be removed from your account for at least 72 hours because of the required quarantine period.

We can still be contacted by email library@westberks.gov.uk

Oxfordshire Libraries (June 2020) - Digital Update**Applying to join Oxfordshire Libraries online**

Go to www.libcat.oxfordshire.gov.uk and click 'Join the Library' and fill in your details. We will email your account access details back to you within 1-2 working days

eBooks and eAudio <https://www.oxfordshire.gov.uk/ebooks>

Choose from a great range of fiction and non-fiction reading for adults and children. We are investing in more titles in response to the current situation. Download the Libby or Borrowbox apps.

eMagazines and eNews <https://www.oxfordshire.gov.uk/enews>

Pressreader and RBdigital magazines provide thousands of UK and international titles of leisure reading or current affairs for you to read online or download. Time to garden, get creative or find out what's going on around the world through curated news content.

Digital learning and study resources

<https://www.oxfordshire.gov.uk/residents/leisure-and-culture/libraries/reference-online/general-reference>

Britannica Online, dictionaries and reference books provide high quality homework support and resources for personal study

eMusic

<https://www.oxfordshire.gov.uk/residents/leisure-and-culture/libraries/reference-online/books-and-music>

– relax and enjoy the best of recordings streamed through Naxos Music Library. Over 60,000 albums to choose from.

Follow us on social media

www.facebook.com/Oxfordshirelibraries

www.twitter.com/Oxonlibraries

Sign up to our eNewsletter www.oxfordshire.gov.uk/librariesnewsletter

Download the Oxfordshire Libraries app to your tablet or phone from your app store.

Lots of our digital services have their own apps, too such as Libby for Overdrive eBooks, Borrowbox, Pressreader, RBdigital Magazines and Naxos Music Library.

OAKLEY WOOD RECYCLING CENTRE

Old Icknield Way, Crowmarsh, Near Wallingford, OX10 6PW

Opening hours

Monday	8am - 5pm
Tuesday	8am - 5pm
Wednesday	8am - 5pm
Thursday	8am - 5pm
Friday	8am - 5pm
Saturday	8am - 5pm
Sunday	8am - 5pm

Household waste

The waste recycling centres accept a wide range of household recyclables and waste for no charge. Non-household waste is accepted for a small charge. Payment can be made by cash or card. See the price list on our [charging for non-household waste](#).

Commercial/trade waste

Waste from only accepted at [Redbridge household waste recycling centre](#)

What your generous donations have made possible

Age UK Oxfordshire and Active Oxfordshire launched the “Share your Warmth” campaign in March. Its purpose was to ask people who receive a winter fuel payment if they would donate it to a new scheme which promotes physical activity and prevents loneliness for older people in Oxfordshire. Together, the donations raised an astonishing £7,600,.

If you do not need your winter fuel allowance, here is how to help.

Donate here: <https://justgiving.com/campaign/shareyourwarmth>
 Send your cheque to: Fundraising, Age UK Oxfordshire, 9 Napier Court,
 Barton Lane, Abingdon, OX14 3YT
 Questions contact: Anna McKay annamckay@ageukoxfordshire.org.uk
 0345 450 1276



WHITCHURCH UNITED CHARITIES— APPLICATIONS OPEN

The Secretary of Whitchurch United Charities would like to remind all families that the Charity has funds available to help meet the costs associated with educational needs such as books, equipment or educational trips. We have not received any applications recently and we are keen for appropriate applications to be made during the next six months.

Eligible students are young people between the ages of 5 and 25 years and whose permanent residence is within the parish of Whitchurch.

Applications are processed twice a year, with the closing dates being 31st March and 30th September. However, late applications are considered if the available funds for the previous 6 month period have not been fully allocated.

All applications and decisions are treated in strict confidence by the Trustees.

If you would like to know more, please do contact Sarah Dixon (our Grant Application Secretary). Contact details: telephone: 0118 984 4262, address: Flint House, Hardwick Road, Whitchurch on Thames, RG8 7HH or e-mail – whitchchurchunitedcharities@gmail.com

Wallingford Food Bank is in need of donations

The Bank is using a "phone and deliver" service to distribute food and toiletries and would appreciate any suitable items such as tinned meat, corned beef, hot dogs, tins of: potatoes, vegetables, tomatoes, fish, fruit, spaghetti, rice pudding and custard. Also: pasta sauce, rice, jam, marmalade, honey, cereal, tea, coffee, drinking chocolate, sugar, longlife juice and milk (not skimmed), biscuits and treats. It is these additional items they would really appreciate please.

No fresh food, but any other food in date by at least 3 months will be appreciated. Money will also be welcomed.

There is a food bank box just inside the Woodcote Coop where you can leave donations or you can drop off donations at the Wood Street entrance to Ridgeway Community Church in Wallingford from 11am – 1pm. Mondays and Thursdays (except Bank Holidays), For more information the Food Bank phone no. is 01491 876677.

If you need help to get donations to Wallingford from Goring please contact Hdnorris@btinternet.com Information on Waste Collection/Disposal

Checkendon Pre School

We are all so pleased to be back at Pre-school and to start our summer term. We are all happy to be back, continuing to create a safe and inspiring environment for the children to continue to learn in.

The children have been really good at following and learning the new routines and procedures and we would like to thank the families and the local community who have been helping us to keep the pre-school a safe and fun place to be. We would also like to thank The village hall and their committee who have been extremely supportive and helpful throughout these times.

We have lots of fun and exciting things for the children to do this term. At present we are following childrens interests which lead us to go on a dinosaur hunt! The children have been exploring the outdoors, exploring their surroundings and using their imaginations hunting for dinosaur bones. We were all really excited when we found a giant Dinosaur egg! We made a nest for it so that we could keep it warm, in hope that it would hatch! We all think it will be a Tyrannasaurus Rex. The children took out their explorers bucket and were able to find lots of dinosaur bones, which we used to make our very own dinosaur. This encouraged the children to use lots of language , discussing sizes shapes of the bones, whether it was heavy or light, big or small or smooth and sharp. The children have enjoyed this so much that we are going to extend this activity.

We have been making the most of our beautiful outdoors and lovely weather exploring and investigating the woodlands and local area incorporating maths in the outdoor environment. Investigating the different shapes we can see in nature and collecting sticks, leaves, flowers and stones in our buckets to create our own shapes, count and solve number problems. Activities such as these enables the children to explore their curiosity, develop team building skills, further enhance their mathematical development and also gives them a great sense of independence.

I am delighted to inform you that Checkendon Pre-School C.I.O has been able to raise just under £1000 last year with a wide variety of fundraising due to the Christmas raffle and our sponsored fishing event. A very big thank you all who supported this scheme. Our next fundraising event is the Checkendon Run, please look on the website for details of when this will happen.

On behalf of Checkendon Pre-School we would like to say thank you so much for your continued support. We look forward to seeing and welcoming our new families as well as seeing our old friends back in September.

To find out more about Checkendon Pre-School C.I.O, do visit our website www.checkendonpreschool.co.uk, call us on 01491 682589, e-mail pre-schoolcheckendon@gmail.com or just pop in – we always look forward to welcoming you to Checkendon Pre-School.
Kelly Mullins



KC
IMPROVEMENTS

PAVING & DRIVEWAY SPECIALISTS

PAVING / DRIVEWAYS / FENCING / DRAINAGE

KC IMPROVEMENTS

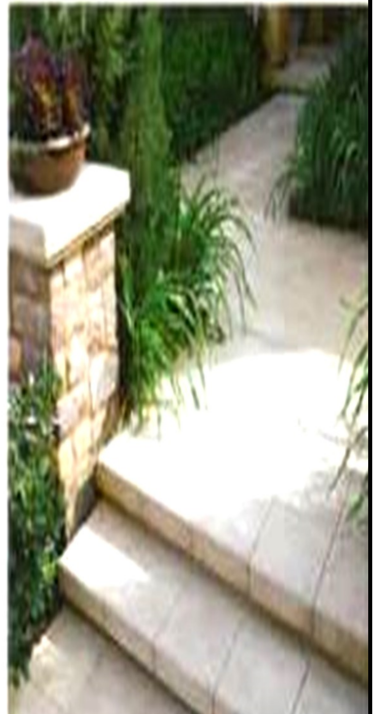
EMMER GREEN

OFFICE: 0118 3487000

MOBILE: 07909 006369

KCIMPROVEMENTS@HOTMAIL.CO.UK

WWW.KCIMPROVEMENTS.CO.UK





Rosie Care

Experienced, trained, local carer,
Fully insured, DBS, Palliative, Dementia

Own car

Kerry Jones—local carer

Tel: 07966509908, 01491 682437



ARBOCARE TREE SURGERY LTD

**Tree surgery
Landscaping
Grounds Maintenance**



**Qualified, insured,
experienced arborists**

- Contractors to the National Trust
 - Surveys & reports
 - Patios & Decking
 - Turfing & Fencing

For more details contact us on:

Freephone 0808 155 5815

Mobile 07778 811136

Email mharvey31@gmail.com

www.arbocare.co.uk



The Whitchurch & District Theatre Club

Organiser: Christine Martin

**“Sonia”, Goring Heath Road, Whitchurch Hill, RG8 7PG
Tel: 0118 9844252 email whitchurchthetreclub@gmail.com**

Whitchurch & District Theatre Club takes you to musicals, plays, ballets, operas, classical concerts etc. once a month or more. Salisbury, Windsor, Guildford, Stratford and Chichester, amongst others, are often visited. Major London venues and productions. Mainly matinees in the week, but sometimes evening performances and weekends. Holiday trips away. Tickets purchased at group/concessionary rates. Coaches depart from Pangbourne. For our forthcoming programme please check the Whitchurch-on-Thames Website.

Subscriptions £14 per annum but £12 if paid online.

UNIVERSITY OF THE THIRD AGE



Would you like the opportunity to expand your mind, meet new people and learn new skills?

U3A (The University of the Third Age) is a UK-wide movement which brings together people in their ‘third age’ to develop their interests and continue their learning in a friendly and informal environment..

If you are retired, semi-retired, about to retire or finished raising a family you are welcome to join us. There is no minimum age. We provide opportunities for education, recreation and companionship in a mix of activities of your choosing.

Activities and classes vary from group to group. For more information just go to <http://u3asites.org.uk/goring-gap> or phone 01491 872023 (for Goring). Other groups can be found on the U3A website.



PURE AND SIMPLE PLANNING.
THAT PROTECTS WHAT MATTERS MOST.

Put your estate and lifetime wealth in good hands.

- Last Will & Testament
- Lasting Power of Attorney
- Protective Will Property Trust
- Living Trust
- Probate & Estate Administration
- Funeral Plans

For more information please call:

David Bowen on 0800 847 7104 or visit
honeygroup.co.uk/people/DavidBowen

Almshouses Sunday Services

11 am Sung Holy Communion: to be resumed

All other Sundays: 9 am Holy Communion
 11am Sung Matins

*All these services are traditional Book of Common Prayer
and are open to the public*

The Chapel, Alnutt Alms Houses, Goring Heath, RG8 7RS

Having a Party ?

Don't forget you can hire cutlery, glasses, plates, catering teapots,
good folding chairs and tables from Goring Heath
Village Hall at competitive prices and nice and local.

Contact Jane Diggle
ginnydiggle@hotmail.com

GORING HEATH NEWSLETTER FACEBOOK PAGE

If you haven't already done so, please head over to our Facebook page which contains useful information as well as forthcoming events, pictures and suggestions from residents. Search for 'Goring Heath Parish News' and 'Like' us to ensure you are kept up to date with any new information that we put on there.

If you'd like to publish any news or advertise any events on the Facebook page, please contact the editor at:

goringheathnewsletter@gmail.com or you can contact the page directly by clicking on the 'Community' button on the Facebook page.

COUNTY and DISTRICT COUNCIL INFORMATION

SOUTH OXFORDSHIRE DISTRICT COUNCILLOR

Peter Dragonetti Covert Cottage, Hill Bottom, Whitechurch Hill, RG8 7PT
07866 202908, 0118 9844711 peter@dragonetti.co.uk

Council Offices: 135 Eastern Avenue, Milton Park, Milton OX14 4SB
See below for dept. phone contacts www.southoxon.gov.uk

OXFORDSHIRE COUNTY COUNCILLOR

Kevin Bulmer 35 Springhill Road, Goring on Thames, RG8 0BY
07803 005680 kevin.bulmer@oxfordshire.gov.uk

Council Offices: County Hall, Oxford, OX1 1ND
01865 792422 www.oxfordshire.gov.uk

POLICE	Thames Valley Police	0845-8505505
POLICE	PEC – Non-Emergency Calls	101
POTHOLES	-	0345-3101111

South Oxfordshire District Council New Department Numbers

Main Customer Service Number: 01235 422422

- ♦ **Planning -** 01235 422600
- ♦ **Building control -** 01235 422700
- ♦ **Environmental health, food and safety -** 01235 422403
- ♦ **Licensing -** 01235 422556
- ♦ **Elections -** 01235 422407
- ♦ **Car parks -** 01235 470118
- ♦ **Community safety -** 01235 422590
- ♦ **Street naming and numbering -** 01235 422344

EMAIL ADDRESS FOR NEWSLETTER

You can get in touch with the Goring Heath Newsletter by emailing:
goringheathnewsletter@gmail.com.

This is for any queries, correspondence, feedback and copy submissions. ,
This will remain constant, even if the editor doesn't!

The Goring Heath Newsletter is published by the Parish Council six times a year and is delivered free to every household in the Parish.

To contributors to the Newsletter:-

It would be most helpful if copy could be submitted to the editor as a document attachment to email and sent to goringheathnewsletter@gmail.com

The views and opinions expressed in this newsletter are not necessarily those of the Parish Council.

Deadline for contributions	Publication month
6th August 2020	September 2020
1st October 2020	November 2020

LOCAL GROUPS—CONTACT DETAILS

Chiltern Society Footpath Representative	Liz Collas	01491680466
Chiltern Society Path Maintenance Volunteers	Howard Dell	01494764149
Goring Heath Bowls Club (Almshouses)	David Watson	01189842174
	http://goringheathbowls.weebly.com	
Goring Heath Parish Charity	Chris Whatmore	01189844022
Goring Heath Scouts, Brownies and Guides	Doreen Pechey	01491681236
Goring Thames Sailing Club	Jennie Wood	01491875619
Pilates (Friday Morning)	Michele Houston	01491575205
RG8 Badminton Club	Julie Drury	07980413026
South Oxfordshire Archaeology Group (S.O.A.G.)	Nancy Nichols	01189787829
Tai Chi and Qigong	Karen Pounds	07867954786
Tots on the Hill, Baby and Toddler Group	Esther Lay-Sans	07713756537
Whitchurch Hill Camera Club	www.whitchurchhillcameraclub.com	
Whitchurch and Goring Heath History Society	Sue Matthews	01189844489
Whitchurch and Goring Heath Twinning	Vicky Jordan	01189843260
Whitchurch Hill WI	Frances Strange	01189842162
Woodcote Volunteers (Office Hours 9.30—11am)	Elizabeth Harrap	01491681171

Goring Heath Parish Hall : Bookings and Enquiries: Jane Diggle
email: ginnydiggle@hotmail.com

CHAIRMAN

Chris Jessop The Cottage, Cold Harbour, RG8 7SY
cjessop1@btinternet.com

VICE-CHAIRMAN

Peter Dragonetti Covert Cottage, Hill Bottom, RG8 0118 9844711
7PT
peter@dragonetti.co.uk

Nick Elsome 6 Heath End, Crays Pond, RG8 7SQ 01491 682775
nelsome@mac.com

Hilary Dewey Old School Cottage, Goring Heath, 01491/680261 or
RG8 7RR 07747/047078
hilarydewey@yahoo.co.uk

Liz Collas Haw Farm, Goring Heath, RG8 7RX 01491 680466
lizcollas1@yahoo.co.uk

Martin Wise 5 Coombe End, Whitchurch Hill, 0118 984 3071
RG8 7TD
martinwise10@hotmail.com

Nick Henry Ladygrove Cottage, Goring Heath, 07900 498717
RG8 7RU
nick.henry@gouldinternational.co.uk

Tarek Moghul 3 Linden Cottages, Whitchurch Hill, 07970 838196
RG8 7PH
tmoghul@me.com

CLERK

Amanda Holland 2 New Buildings, Whitchurch Hill, 0118 9844867
RG8 7PW
goring.heath.parish.council@gmail.com

GORING HEATH NEWSLETTER

EDITOR

Lucy Turner 5 Hill Bottom Close, RG8 7PX 0118 9842415
goringheathnewsletter@gmail.com

ADVERTISING

Amanda Holland 2 New Buildings, RG8 7PW 0118 9844867
goring.heath.parish.council@gmail.com